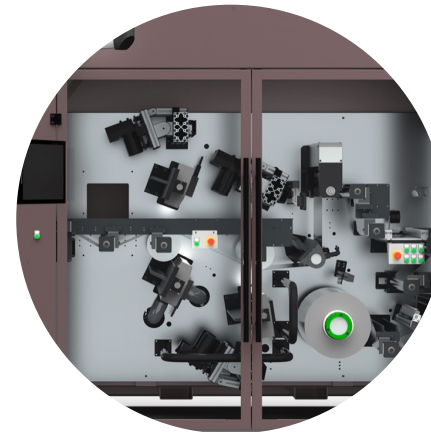


Company Presentation

Printum Technology GmbH - Special Machinery Engineering



Manuel Friedmann



*Managing Director
Operations & Business Development
Printum Technology GmbH*

Eberhard Keller



*Head of Engineering
Printum Technology GmbH*

Andreas Weigel



*Managing Director
Sales & Business Development
Printum Technology GmbH*

Company History

1981
Start in the label industry



1998
Cooperation with Nilpeter A/S



2004
Special machines
Label-Converting



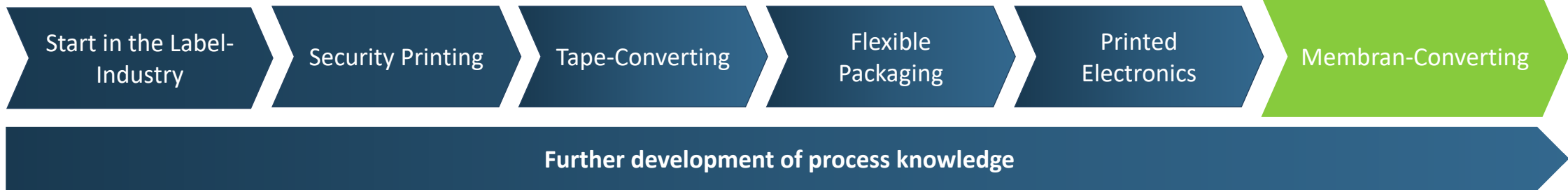
2013
Technology transfer
manufacturing industry



2016
Relocation of Printum GmbH

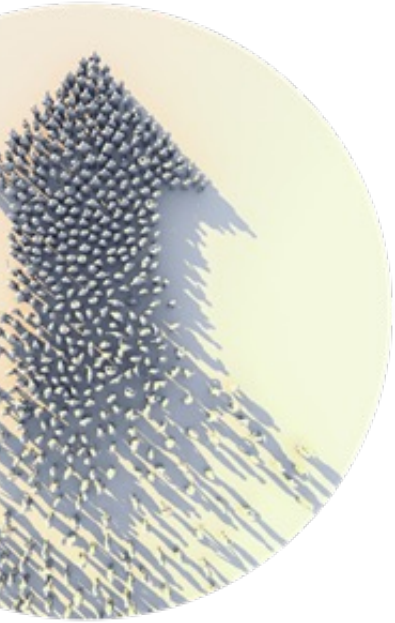


2020
The WeiterMacher | Printum
Technology GmbH






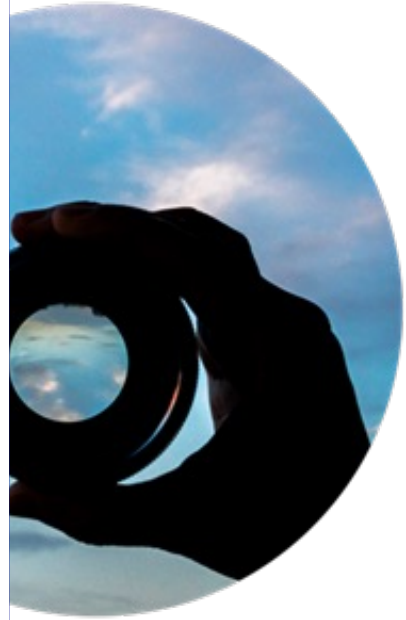
The Trends

- 
- ... that we see in web converting, in web processing
 - Time-to-Market: Constantly shortened procurement periods for production equipment
-> **Modular process platforms**
 - Individualization: Reduced batch sizes with greater product diversity
-> Short set-up times with high **flexibility** and **format variability**
 - High availability: Intelligent interlinking or division of system components, buffer storage -> reduction of **system complexity**
 - Industry 4.0
-> **Machine networking**, open interfaces, digital documentation
 - Quality control after each finishing step
-> **Marking of NOK areas**
-> **life record**

The Vision



We are the preferred **international** and **cross-industry innovation partner** for the rotary processing of sensitive narrow web roll materials.



The Focus

- We develop modular machines for the rotary processing of narrow web roll materials (up to 1000 mm)
- We translate pick & place and manufacturing production into rotary production processes
- We master high-precision web transport through all process steps - even with the lowest web tension
- If the market does not offer a convincing solution for a process step, we develop suitable units ourselves
- Mechanics and controls are simultaneously adapted to the process



The Facts

- ✓ 30 years of Know-How
- ✓ 20 creative employees
- ✓ 6.5 million € annual turnover

References

Label Converting



General Converting



Hydrogen | Battery | Solar



Membrane Converting

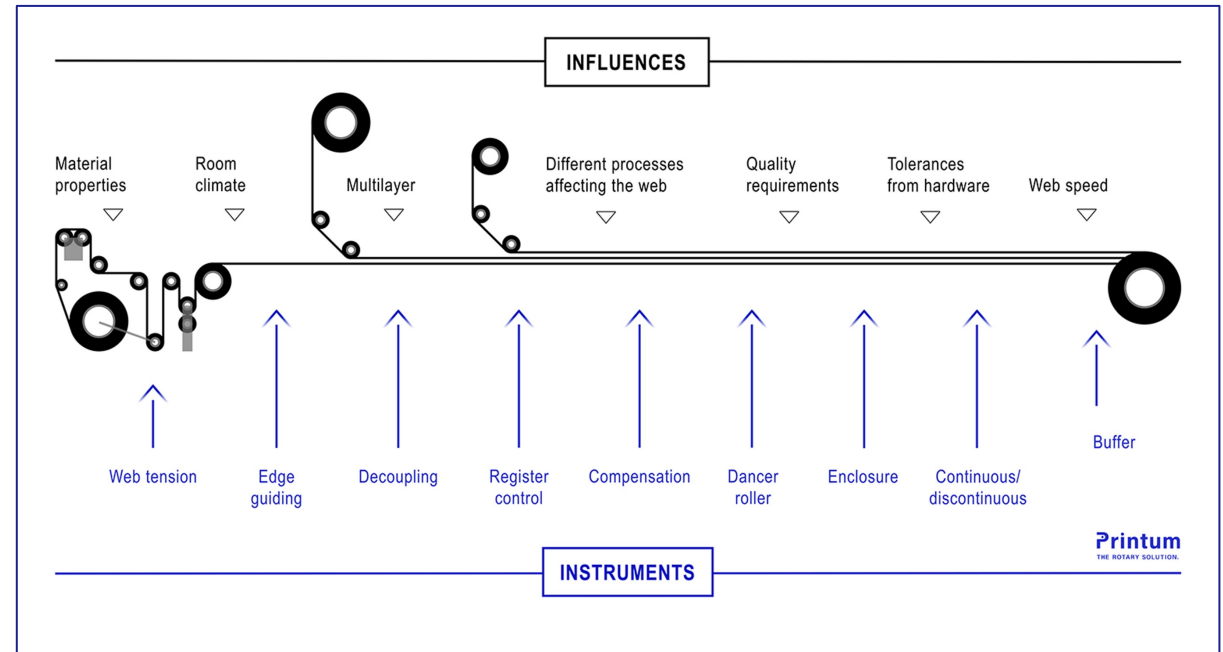
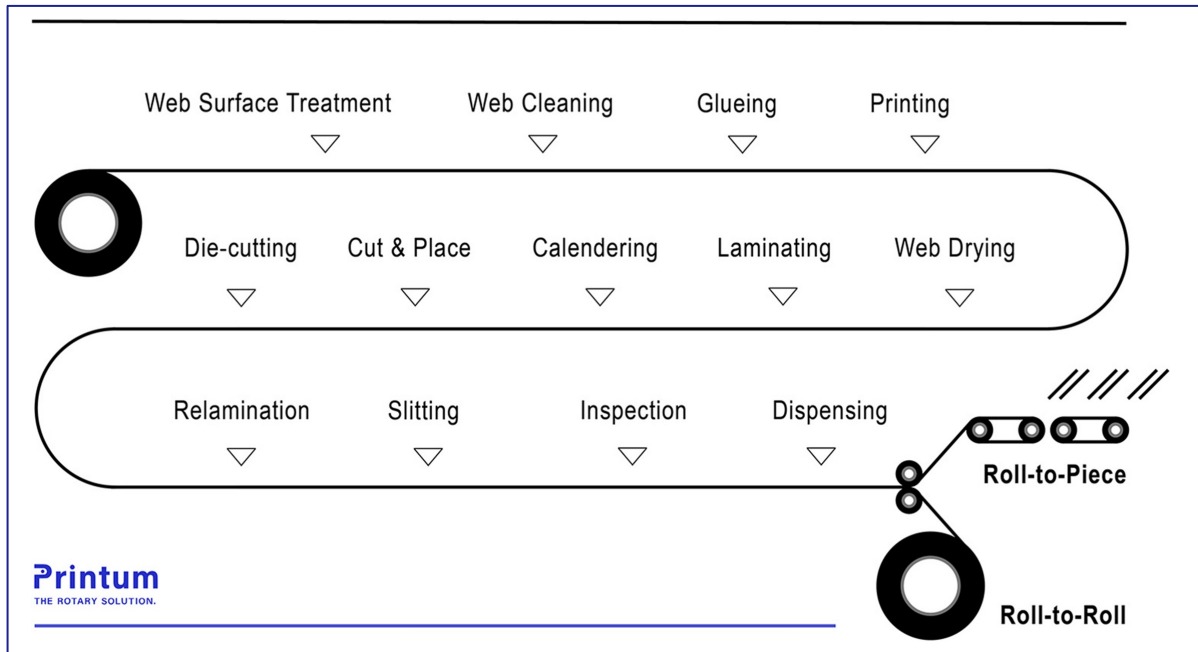


Flexible Packaging



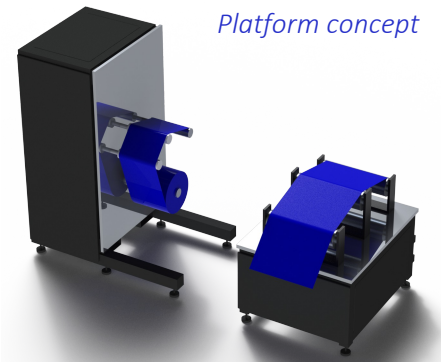
OEM's





Mechanics

- Modular design with welded standard frames
- Standardized core assemblies
- Mounting plate made of aluminum or steel
- Control cabinet optionally integrated into the machine, free-standing or without control cabinet



Platform concept

Control system

- Decentralized control components per module
- Standardized and tested software modules
- Open and PC-based control from Beckhoff
- Real-time control with TwinCAT 3

References and case studies

Further information can be found at:
<https://printum-technology.com/>